



# Xenia Township Comprehensive Plan

Maps ([arcgis.com](https://arcgis.com)) Read Me File  
18 Aug 25



# Overview

- As part of the development of the Xenia Township Comprehensive Plan, a variety of maps have been developed using [ArcGIS Online](https://www.esri.com/en-us/arcgis/products/arcgis-online/) (<https://www.esri.com/en-us/arcgis/products/arcgis-online/>).
- Many of these maps are shared for use by the Compressive Plan Steering Committee as well as township residents and other plan stakeholders
  - The primary method of distributing the maps is as links embedded in PowerPoint presentations that also contain context and analysis of the maps
- This file is provided as an introduction to using ArcGIS Online for the further analysis of these maps



# Map Collections

- ExistingLandUse-20250729 PowerPoint
  - Multiple maps based on Greene County parcel tax use data (not zoning)
    - Overall Land Use Map
    - Land Uses by selected types
- Annexation\_XeniaTwp-20250727 PowerPoint
  - Map of the Incorporated parts of Xenia Twp (that is, Xenia Twp that is also part of either Xenia City or Fairborn City)
- PublicServices+Utilities\_XeniaTwp-20250814 PowerPoint
  - Supersedes UrbanServiceBoundary\_XeniaTwp-20250729 PowerPoint
  - Map of Greene CATS service in or near Xenia Twp
  - Maps of watersheds, topography, hydrology, and water & sewer service in Xenia Twp and Greene County



# Opening the Map in ArcGIS Online Map Viewer (p1)

- Hyperlink to each map is on the lower left of each PowerPoint page with a map
- Cntl+Click should open the map in the default browser
  - Or manually copy the URL
  - Or right click on the link in the presentation for the context menu



## Current Tax Land Uses

- By Major Categories of the [Auditors Land Use Codes](#) in the Greene GIS [Parcels Dataset](#)
  - Used for Property Tax Rates
- Zoning Map (Next Page) Defines Zoning District Boundaries from the Township Zoning Resolution
  - Used to define Permitted and Conditional Uses
  - Some current uses are "Grandfathered In"

6/29/2025

Parcels

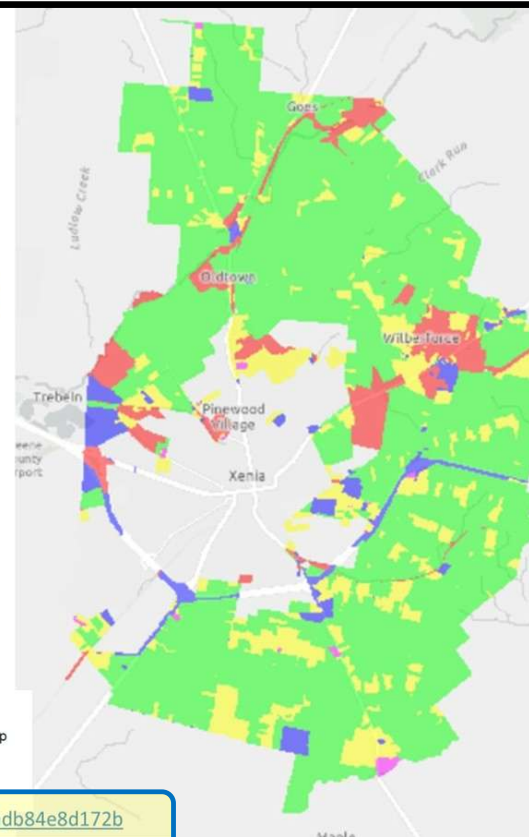
Agricultural

Residential

Churches, Houses of Worship

Commercial and Industrial

Empty



<https://www.arcgis.com/apps/mapviewer/index.html?webmap=4bf75d550c0a4339bdc3adb84e8d172b>

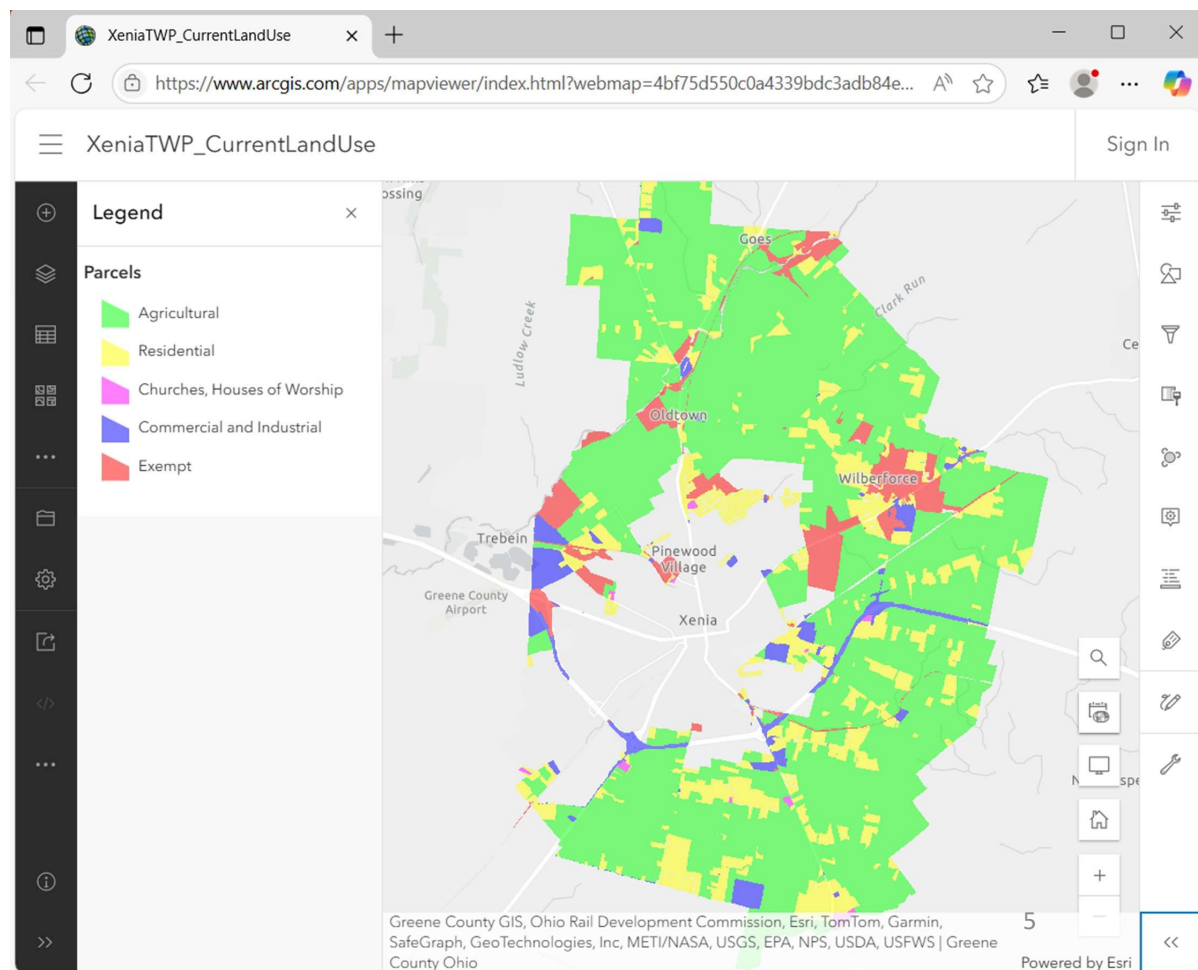


# Opening the Map in ArcGIS Online Map Viewer(p2)

Current Tax Land Uses Map  
opened in Microsoft Edge

## Map Navigation Quick Start

- To zoom, use Zoom in (+) and Zoom out (-) buttons, or the mouse and wheel button.
- To pan, use the mouse or the arrow keys on your keyboard.





# Changing the Basemap



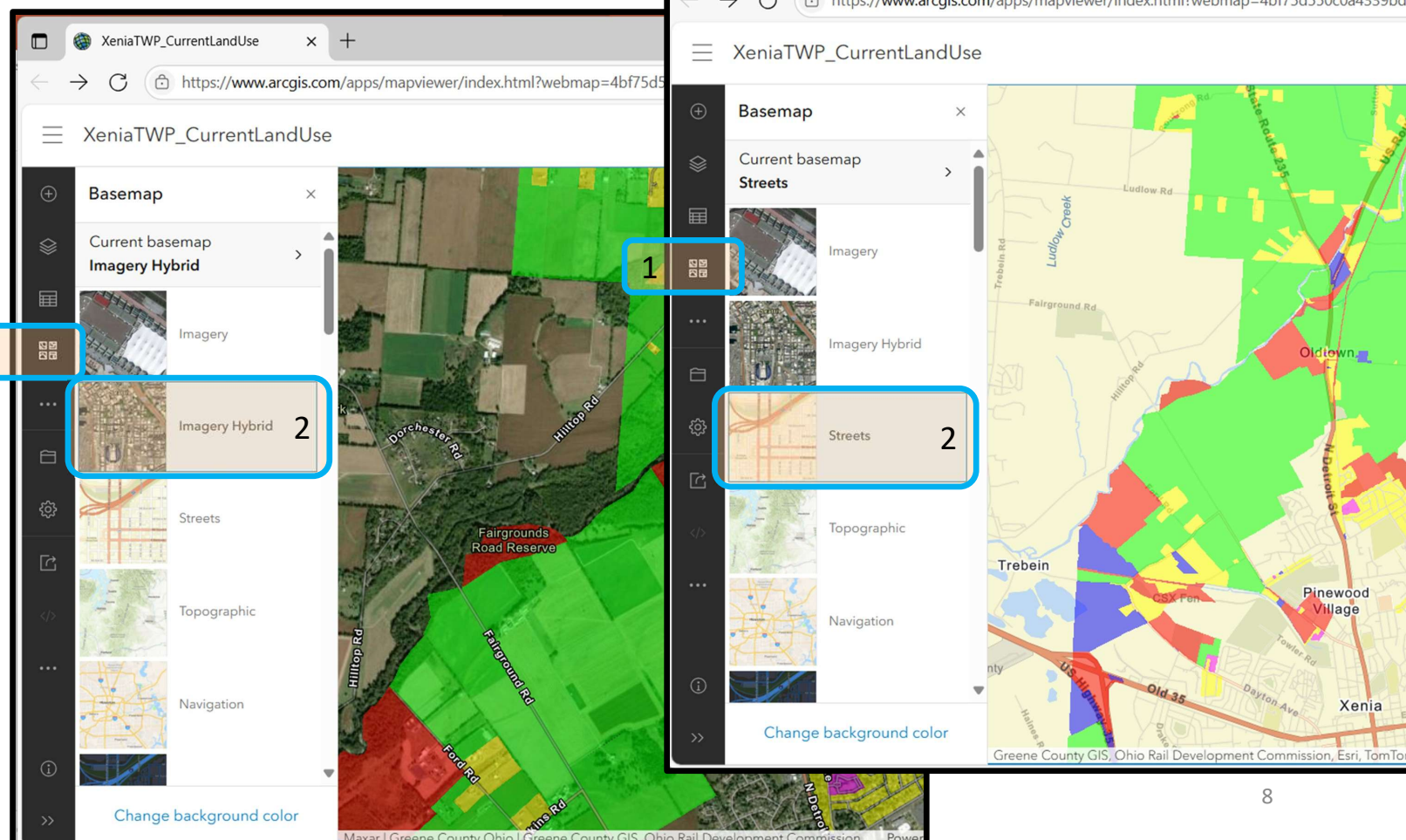
# Basemaps in ArcGIS Online Map Viewer

- Map Viewer contains many “built in” maps
  - Streets, landmarks, places of interest
  - Political boundaries
  - Overhead imagery
  - Topology
  - Combinations of the above
- A subdued map “Light Gray Canvas” is the basemap for many of the maps created for the Comprehensive Plan
- The next few charts will show how to change the basemap



# Changing Basemaps in ArcGIS Online Map Viewer

1. Select “Basemap” from the left hand menu
2. Select desired basemap from the list that appears
  - “Imagery Hybrid” and “Streets” shown





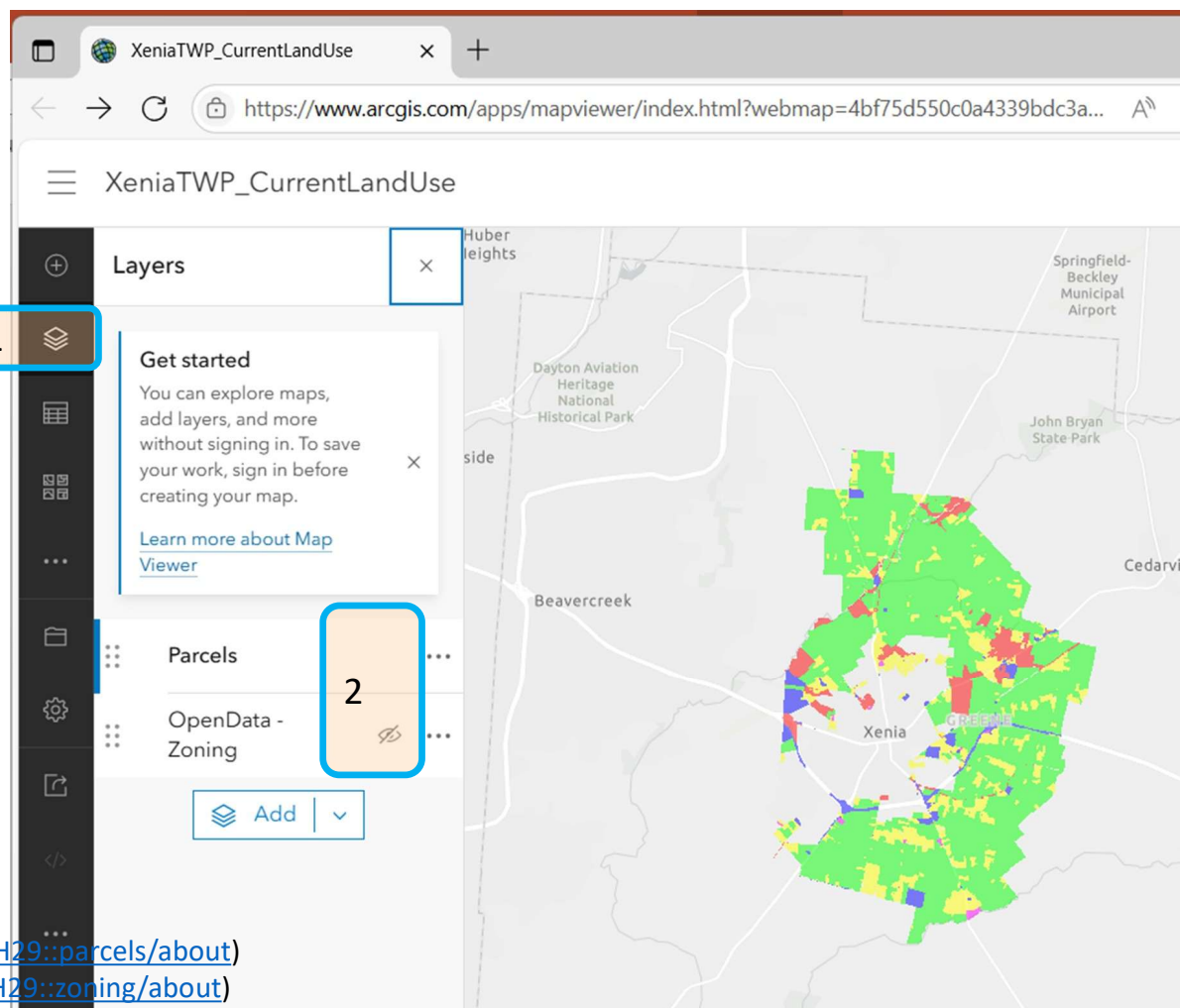


# Layers and Transparency



# Layers

- Data in ArcGIS is displayed in “Layers”
  - The basemap is a separate layer
- The Current Tax Land Uses Map contains a basemap and two layers added by the mapmaker
  - Parcels ([Greene County Parcel Dataset](#))
  - Zoning (another [Greene County maintained GIS dataset](#))
- When the map opens, the parcel layer is visible and the zoning layer is hidden
- Layers can be toggled on and off
  1. Layer button on the left hand menu
  2. “Eyeball” toggle on for each layer



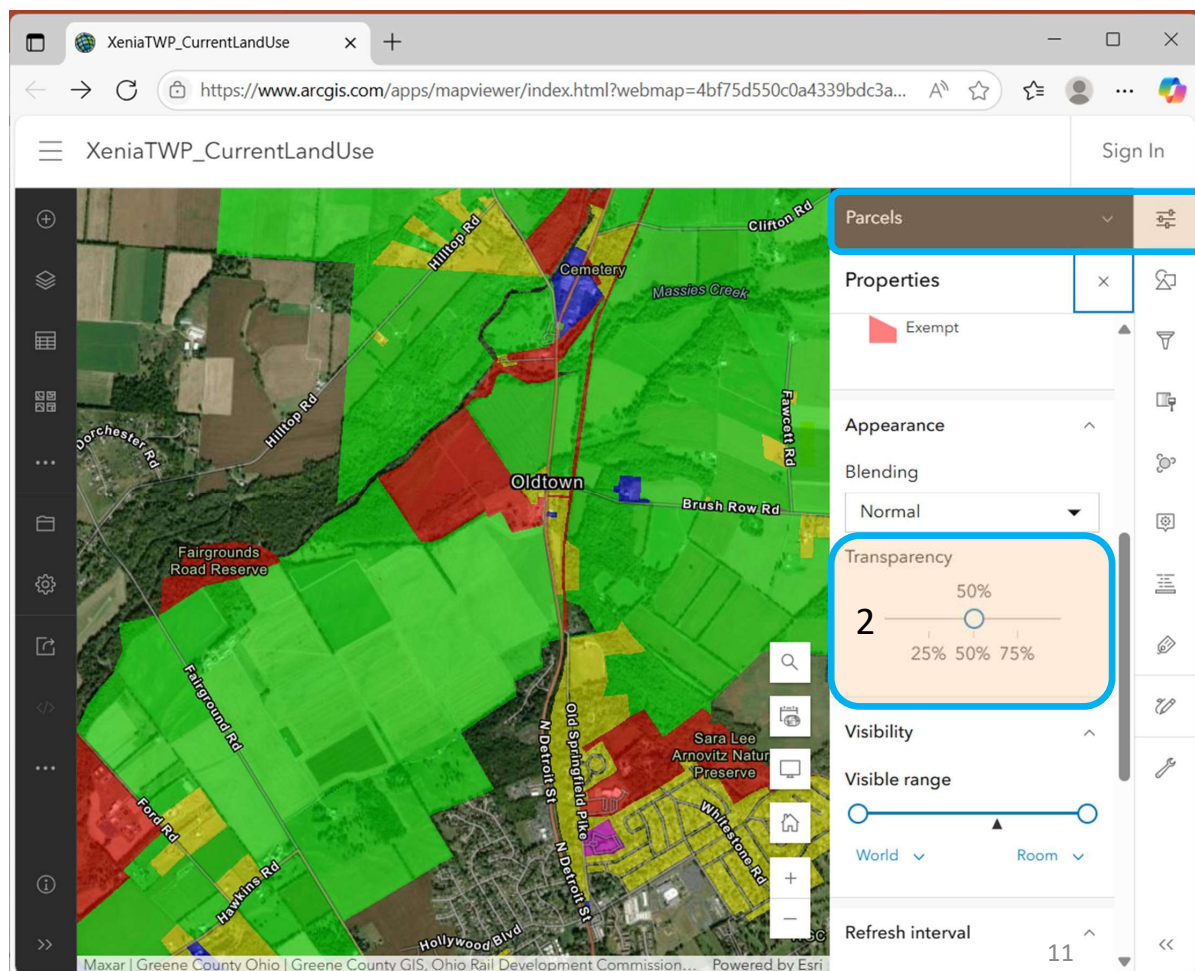
Parcels (<https://gishub-gimsoh29.opendata.arcgis.com/datasets/GIMSOH29::parcels/about>)

Zoning (<https://gishub-gimsoh29.opendata.arcgis.com/datasets/GIMSOH29::zoning/about>)



# Transparency

- Each ArcGIS Layer had a property called “Transparency” (Including the basemap layer)
- When the map opens, the transparency of the parcels layer is at 50%
  - This might make viewing the text and graphics of the basemap difficult
  - As opposed to toggling the layer off to see the basemap, the transparency can be adjusted
- Transparency is found by
  1. Select Properties button on the right hand menu
    - Ensure the desired layer is listed at the top of the pop-out menu
    - The layer name is a pull-down menu so the desired layer can be selected
  2. Scroll down to the transparency section of the properties pane and adjust the transparency using the slider bar.





## Conclusion and More Information

- Don't be afraid to explore, any changes you make only effect your view of the map
  - Reload the browser page to get back to the original view of the map
- arcgis.com has extensive online references, tutorials, and training
  - Some is available for free, more is available for paid customers
- [Getting Started \(View Maps\)](https://doc.arcgis.com/en/arcgis-online/get-started/view-maps-mv.htm) is a good place to start
- The [home page for ArcGIS Online](https://www.esri.com/en-us/arcgis/products/arcgis-online/overview) is focused on paid customers, but has some good info before you hit the paywall.